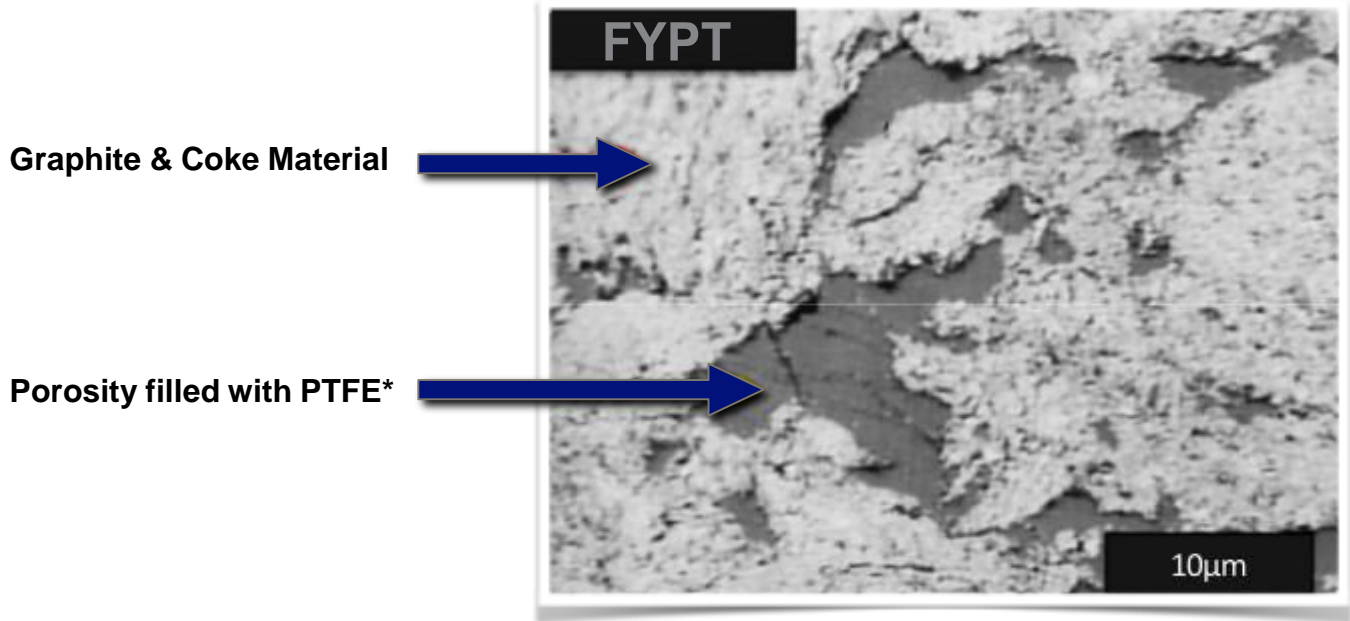


## FYPT - PTFE\* impregnated – ISOSTATIC Graphite



Operating Conditions	
Pressure	Up to 290 psig (20 barg) (related to design adopted)
Temperature	Up to 482°F (250°C)
Corrosive Media	Adapted to most common acid media (HCl, H <sub>2</sub> SO <sub>4</sub> , H <sub>3</sub> PO <sub>4</sub> , organic acid), solvents, oils and organic media. Not adapted to oxidative media (HNO <sub>3</sub> , Cl <sub>2</sub> , and alkaline media (PH >9). We will study your operating conditions (concentration, temperature, pressure) to propose the adequate grade of material (YPH, FYPH, FYPT or SiC).
Cycling of temperature	Adapted to cycling of temperature with good resistance
Thermal conductivity	Good thermal conductivity (105 W m <sup>-1</sup> K <sup>-1</sup> )
Graphite grain size	0.043-0.009 mm
Impregnating agent	PTFE resin
Density	1.92 g cm <sup>-3</sup>
Flexural strength	35.0 MPa
Compression strength	72.0 MPa
Young modulus	11.0 GPa

\* PTFE - Poly-Tetra-Fluor-Ethylene