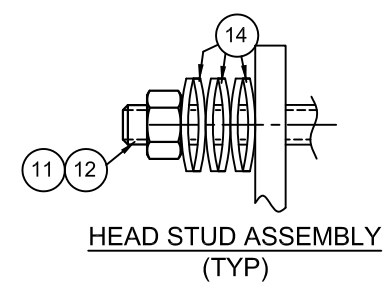
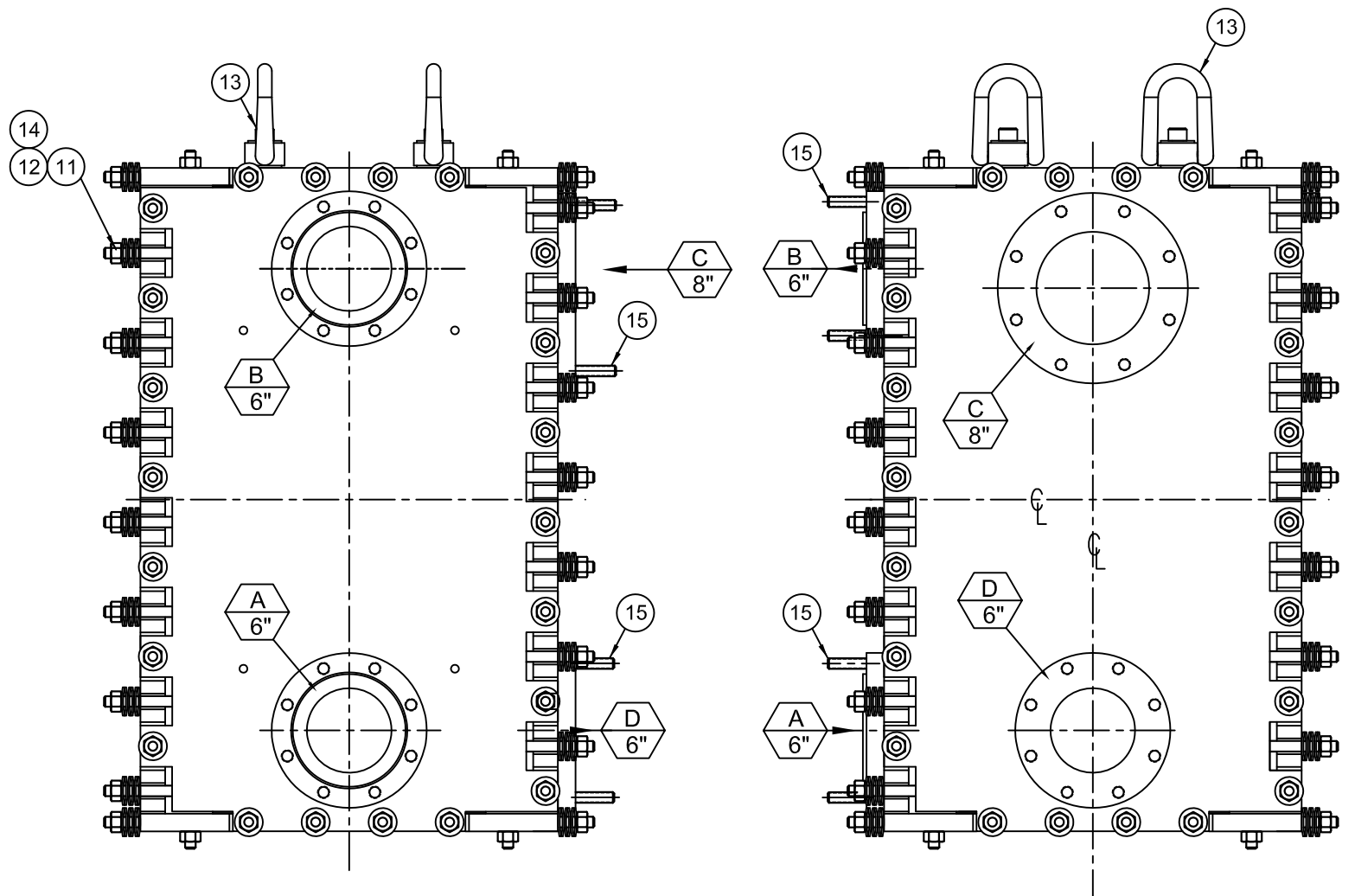
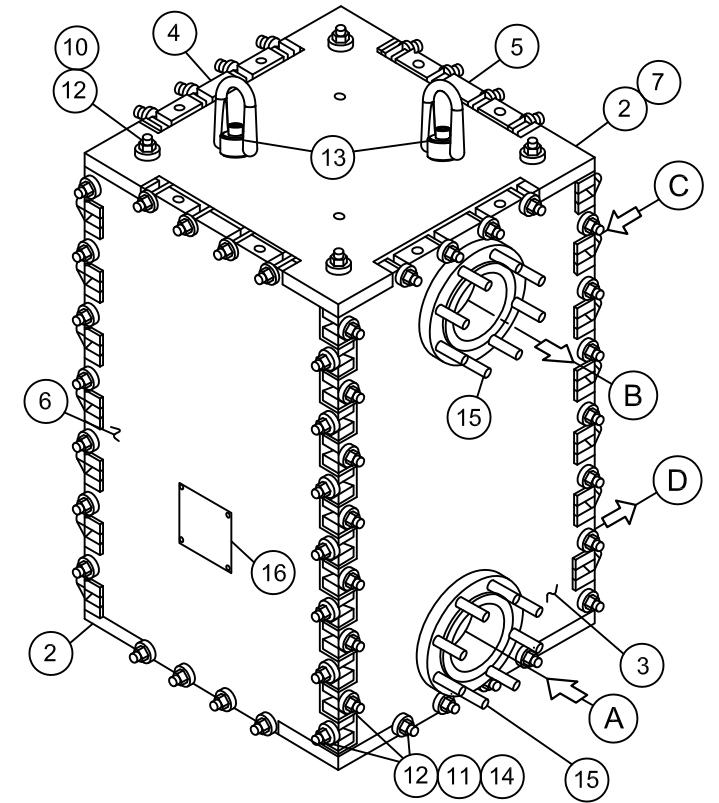
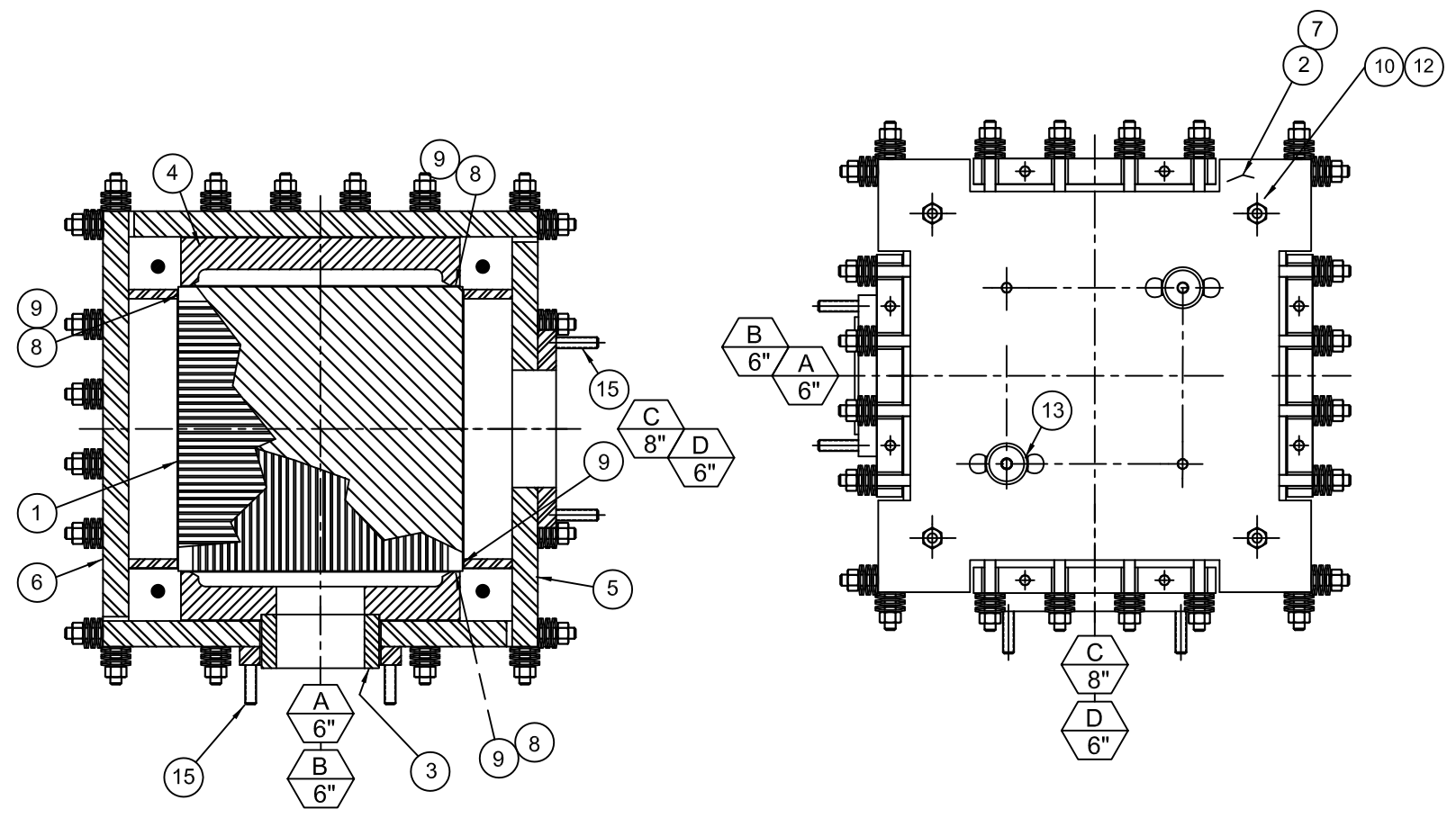


| NOZZLE SCHEDULE | | |
|-----------------|-----------------------------------|----------------|
| ITEM | SIZE | DESCRIPTION |
| A | 6" ANSI 150# R.F. IMPERVITE LINED | PROCESS INLET |
| B | 6" ANSI 150# R.F. IMPERVITE LINED | PROCESS OUTLET |
| C | 8" ANSI 150# F.F. | SERVICE INLET |
| D | 6" ANSI 150# F.F. | SERVICE OUTLET |

| ITEM | QTY | DESCRIPTION |
|------|-----|--|
| 1 | 1 | GRAPHITE CUBIC BLOCK |
| 2 | 2 | CLAMP PLATE |
| 3 | 1 | PROCESS INLET /OUTLET HEAD |
| 4 | 1 | PROCESS RETURN HEAD |
| 5 | 1 | SERVICE INLET /OUTLET PLATE |
| 6 | 1 | SERVICE RETURN PLATE |
| 7 | 2 | CLAMPING PLATE PRESSURE PAD |
| 8 | 1 | 1/8" x 10 FT. LONG RIB GASKETING |
| 9 | 1 | HEAD GASKETING -1/2" X 42 FT. LONG |
| 10 | 4 | 3/4"-10 UNC x 49.75" LG. THREADED ROD |
| 11 | 88 | 3/4"-10 UNC x 5.75" LONG STUD |
| 12 | 96 | 3/4"-10 UNC REG. HEX NUT |
| 13 | 2 | HOIST RING -McMaster-Carr |
| 14 | 528 | 3/4" BELLEVILLE SPRING WASHER (12-H-150) |
| 15 | 32 | 3/4"-10 UNC x 3.75" LONG STUD |
| 16 | 1 | NAME PLATE |



CG Thermal LLC

PROCESS EQUIPMENT

8950 Dutton Drive
Twinsburg, OH 44087

PHONE 330-405-0844
FAX 330-487-0304

MODEL 250/250
CUBIC HEAT EXCHANGER
(6) PASS PROCESS, (2) PASS SERVICE

| FINISH SYMBOLS | | UNLESS OTHERWISE SPECIFIED | |
|----------------|------------|----------------------------|----------------------------------|
| | POLISH | | 1 BREAK ALL SHARP CORNERS |
| | GRIND | | 2 ALL 2 P.L.C. DIM +/- .015 |
| | FINE MACH. | | 3 ALL 3 P.L.C. DIM +/- .005 |
| | SEM-FINE | | 4 ALL FRACTIONAL DIM +/- 1/8 |
| | MEDIUM | | 5 ALL DIM ARE IN ENGLISH MEASURE |
| | ROUGH | | |

CG Thermal LLC ISSUES THIS DRAWING FOR ENGINEERING INFORMATION ONLY. IT MAY NOT BE REPRODUCED OR USED TO MANUFACTURE ANYTHING SHOWN HEREON WITHOUT THE WRITTEN PERMISSION FROM CGT TO THE USER. IT IS PROTECTED AS AN UNPUBLISHED WORK UNDER THE U.S. COPYRIGHT ACT OF 1976 AND INCORPORATING MATERIALS COMPILED IN THE YEARS OF DRAWING CREATION AND SUBSEQUENT REVISIONS ALL AS IDENTIFIED IN THE TITLE BLOCK HEREOF. UNAUTHORIZED USE OR REPRODUCTION MAY INVOLVE CIVIL AND/OR CRIMINAL SANCTIONS.

| CUST | | CUST PO | |
|-------|---------|-------------|-------|
| DRAWN | DATE | APPD | DATE |
| | | | |
| SIZE | JOB NO. | DWG NO. | REV |
| A | | C250-SKETCH | |
| SCALE | | | SHEET |

| NO. | REVISION | BY | DATE | CHKD. | DATE |
|-----|---|-----|---------|-------|------|
| 1 | ADDED "AS BUILT", WAS:34 FT LBS NOW: 26 FT LBS. | KWD | 10-2-14 | | |